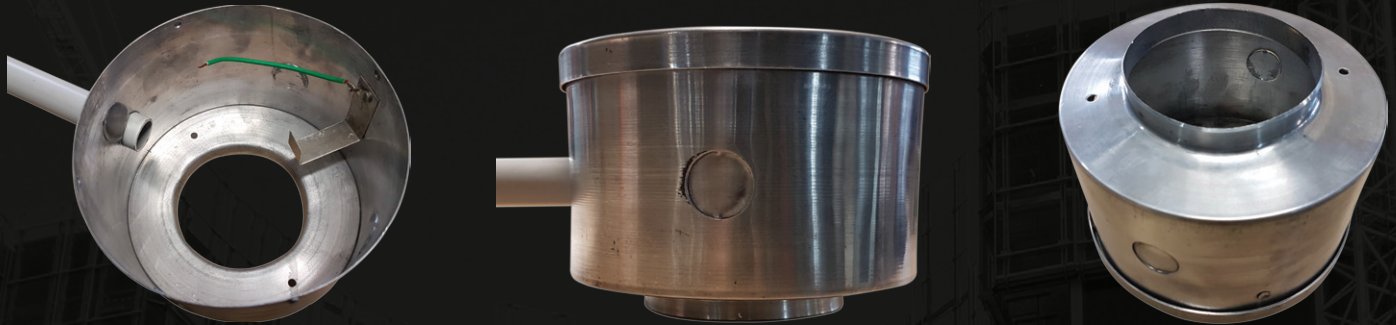


LIGHTCAN[™]

- By PowAFix

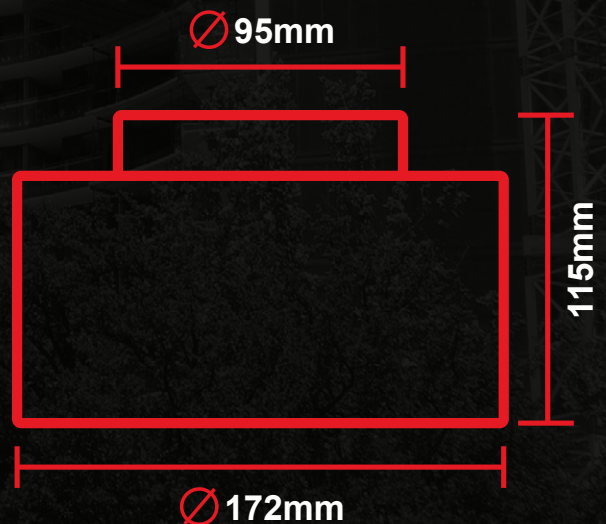
The Easy way to cast into concrete making provision for your flush mounted downlights



What is LIGHTCAN?

The POWACITY LIGHTCAN is commonly used for any downlight, that requires to be set in concrete.

- ✓ This Lightcan canister, would be installed when pouring the concrete, so that the downlight can be fitted at a later date.
- ✓ The size of it's opening, will accommodate downlights that have 90-94mm cut-out.
- ✓ If you need a flush finish underneath a concrete balcony, soffit or underground carpark for example, if you installing LED downlights, halogen downlights or compact fluorescent downlights etc., then the easy to install POWACITY LIGHTCAN is essential.
- ✓ Has a lid which you removed to install the POWACITY LIGHTCAN fix with 2 screws down & concrete formwork deck.
- ✓ If you need to earth it, it has preinstalled earth wire.
- ✓ Has a small mounted hook to help hold transformers to the side.
- ✓ For extra precautions some trades people duct tape the lid on for extra security in rough environments of concrete pouring.
- ✓ It has 4 knock out ports for you to bring your 20-25mm conduit into the box.
- ✓ Most find it not necessary but some contractors fill it with general sand to stop in the unlikely event of weeping in any of the concrete.



NATIONAL DELIVERY • TWICE DAILY DIRECT TO SITE