

MaxiCollars™

Advanced-technology intumescent for maximum performance in sealing combustible pipes & lagged metal pipes

Approved to AS1530.4: 2014 & AS4072.1-2005



Technical Data Sheet

Edition 4

Published: May 2021



Maximum performance fire collars...

AU: 1300 303 366

W: powagroup.com.au

KEY BENEFITS

- Wide range of FRL approvals – 60min, 90min, 120min & 240min FRL's
- Only 30mm / 40mm deep allows use in tight areas
- Advanced technology intumescent – High expansion rate
- Approvals for FR Plasterboard walls & ceilings, masonry, concrete, Speedpanel, Hebel & concrete floor slabs
- Wide variety of approved services
- Approved to AS1530.4: 2014 & AS4072.1

INTRODUCTION

BOSS MaxiCollars™ set new standards in the use of retrofit pipe collars.

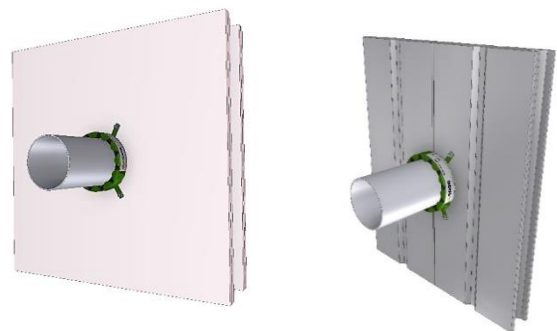
With a unique design and advanced intumescent technology, MaxiCollars™ provide one of the highest expansion rates available on pipe collars, providing a high performance fire protection.

Coupled with a unique profile of only 30mm or 40mm depth, MaxiCollars™ are the best choice for tight fitting areas or closely installed pipes.



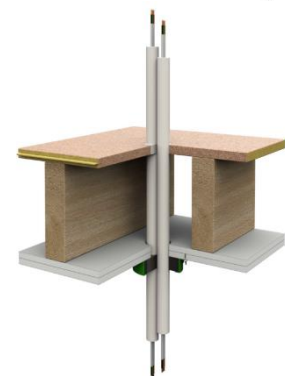
Tested in a wide variety of walls, floors and ceilings, MaxiCollars™ have approvals in the following substrates:

- FR Plasterboard
- Concrete & Masonry walls
- BOSS Batt
- AAC / Hebel
- Speedpanel
- Supapanel
- Pronto Panel
- Comflor floor slabs
- Cross Laminated Timber



MaxiCollars™ have approvals for a wide variety of services:

- uPVC DWV Pipes
- uPVC Conduits
- cPVC Sprinkler Pipes
- Lagged Steel, Copper & Iron Pipes with Thermobreak® Pipe Insulation
- A/C Paircoil Bundles
- PEX Water Pipes
- PEX AL Gas Pipes
- PP-R Pipes (Aquatherm)
- HDPE Pipes



For detailed performance information refer to Section - Performance Specification beginning on page 3.

PERFORMANCE SPECIFICATIONS

BOSS MaxiCollars™ have extensive fire test approvals including AS1530.4: 2014 & AS4072.1-2005 offering 60min, 90min, 120min & 240min FRL's. Please refer to the further tables contained in this document for specific performance information relevant to individual applications approved to AS1530.4: 2014 & AS4072.1-2005. For other approvals to EN1366 & EN13501-2 please contact BOSS Technical Services on +612 9531 8591 or info@bossfire.com.au.

IMPORTANT:

In order to ensure performance and compliance, passive firestopping products must be installed in accordance with the test evidence, manufacturer's specifications or be the subject of a performance solution.

Each project and/or application may have specific requirements and you should investigate these carefully.

Ensure that you read and understand the appropriate certification and how it relates to your specific construction details, and ensure you seek acceptance from the Certifying Authority or compliance inspector before installation.

Ensure your installation is carried out in accordance with the test certification, manufacturer's instructions, and in accordance with the relevant local building regulations, National Construction Code or Building Code.

For updates on the range of BOSS Fire® certification please contact BOSS Technical Services. +612 9531 8591 OR info@bossfire.com.au

PEX WATER & PEX AL GAS PIPES

Service Penetration	Element	Substrate	System Description	Seal Size	FRL	Specific Dimensions	Certification Reference
PEX AL Pipe 25mm	Wall	Min 118mm FR Plasterboard Concrete, Masonry	BOSS MaxiCollar™ 32mm with FireMastic-HPE™ Infill	MC-32 with FMHPE Infill to depth of Collar.	-/60/30	25mm OD Pipe	COT 180403c.1
PEX Pipe 25mm	Wall	Min 118mm FR Plasterboard Concrete, Masonry	BOSS MaxiCollar™ 32mm with FireMastic-HPE™ Infill	MC-32 with FMHPE Infill to depth of Collar.	-/60/30	25mm OD Pipe	COT 180403c.1
PEX Pipe 25mm	Wall	Min 144mm FR Plasterboard Concrete, Masonry	BOSS MaxiCollar™ 32mm with FireMastic-HPE™ Infill	MC-32 with FMHPE Infill to depth of Collar.	-/120/60	25mm OD Pipe	COT 180403h.1
2 x PEX Pipe 20mm	Wall	Min 118mm FR Plasterboard Concrete, Masonry	BOSS MaxiCollar™ 40mm with FireMastic-HPE™ Infill	MC-40 with FMHPE Infill to depth of Collar.	-/60/30	2 x 20mm OD Pipes	COT 180403c.1
PEX Pipe 20mm	Wall	137mm CLT (Cross Laminated Timber)	BOSS MaxiCollar™ 32mm	MC-32 with FireMastic-300™ to annular gap & infill around pipe.	-/90/90	20.4mm OD Pipe	EWFA 54783400.1

The table above only relates to BOSS Fire® solutions using the MaxiCollars™ product. For other BOSS Fire® products that offer certified PEX & PEX-AL pipe penetration systems please consult the BOSS Fire® website - bossfire.com



uPVC PIPES & CONDUITS

Service Penetration	Element	Substrate	System Description	Seal Size	FRL	Specific Dimensions	Certification Reference
uPVC Pipe 32mm	Ceiling	Min 26mm FR Plasterboard - Overall 235mm Ceiling Floor System	BOSS MaxiCollar™ 40mm with FireMastic-300™	MC-40 with FM300 to annular gap.	-/60/60 -/90/90	42mm OD Pipe	SFC FRT 180474
uPVC Pipe 40mm	Wall	Min 118mm FR Plasterboard Concrete, Masonry	BOSS MaxiCollar™ 40mm with FireMastic-300™	MC-40 with FM300 to annular gap.	-/60/60	42.4mm OD Pipe	COT 180403d.1
uPVC Pipe 50mm	Wall	Min 118mm FR Plasterboard Concrete, Masonry	BOSS MaxiCollar™ 50mm with FireMastic-300™	MC-50 with FM300 to annular gap.	-/60/60	55.6mm OD Pipe	COT 180403d.1
uPVC Pipe 80mm	Wall	Min 118mm FR Plasterboard Concrete, Masonry	BOSS MaxiCollar™ 80mm with FireMastic-300™	MC-80 with FM300 to annular gap.	-/60/30	82mm OD Pipe	COT 180403d.1
uPVC Pipe 100mm	Wall	Min 144mm FR Plasterboard Concrete, Masonry	BOSS MaxiCollar™ 100mm with FireMastic-300™	MC-100 with FM300 to annular gap.	-/120/120	110mm OD Pipe	COT 180403g.1
uPVC Pipe 100mm	Wall	100mm BOSS Batt (2 x 50mm Layers)	BOSS MaxiCollar™ 100mm with FireMastic-300™	MC-100 with FM300 to annular gap.	-/120/120	109mm OD Pipe	FRT 190428
uPVC Pipe 100mm	Wall	62mm Supapanel	BOSS MaxiCollar™ 100mm with FireMastic-300™	MC-100 with FM300 to annular gap.	-/120/90	110mm OD Pipe	IGNS-8199 I01 R02
uPVC Pipe 40mm	Wall	75mm AAC / Hebel	BOSS MaxiCollar™ 40mm with FireMastic-300™	MC-40 with FM300 to annular gap.	-/120/90	48.2mm OD Pipe	SFC FRT180473a.1
uPVC Pipe 50mm	Wall	75mm AAC / Hebel	BOSS MaxiCollar™ 50mm with FireMastic-300™	MC-50 with FM300 to annular gap.	-/120/120	55.7mm OD Pipe	SFC FRT180473b.1
uPVC Pipe 80mm	Wall	75mm AAC / Hebel	BOSS MaxiCollar™ 80mm with FireMastic-300™	MC-80 with FM300 to annular gap.	-/120/120	82.1mm OD Pipe	SFC FRT180473b.1
uPVC Pipe 25mm	Floor	Min 130mm Thick Concrete / Comflor® 60	BOSS MaxiCollar™ 32mm™, FireMastic-300™ & BOSS Batt sealed with Ablative Coating.	MC-32 with FM300 to annular gap.	-/120/120	33.6mm OD Pipe	SFC FRT180137a.2
uPVC Pipe 100mm	Floor	Min 130mm Thick Concrete / Comflor® 60	BOSS MaxiCollar™ 100mm™, FireMastic-300™ & BOSS Batt sealed with Ablative Coating.	MC-100 with FM300 to annular gap.	-/120/120	109.8mm OD Pipe	SFC FRT180137a.2
Conduit Bundle	Ceiling	Min 26mm FR Plasterboard - Overall 235mm Ceiling Floor System	BOSS MaxiCollar™ 65mm with FireMastic-HPE™ Infill & FireMastic-300™	MC-65 to underside with FMHPE Infill to depth of Collar. FM300 - Annular Gap x 19mm (D) Floor Side	-/60/60 -/90/90	2 x 25mm uPVC Conduits with 2 x TPS Power Cables 2C+E 2.5mm²	SFC FRT180474.2

The table above only relates to BOSS Fire® solutions using the MaxiCollars™ product. For other BOSS Fire® products that offer certified uPVC pipe & conduit penetration systems please consult the BOSS Fire® website - bossfire.com

HDPE PIPES

Service Penetration	Element	Substrate	System Description	Seal Size	FRL	Specific Dimensions	Certification Reference
HDPE Pipe 75mm	Floor	Min 130mm Thick Concrete / Comflor® 60	BOSS MaxiCollar™ 75mm™, FireMastic-300™ & BOSS Batt sealed with Ablative Coating.	MC-75 with FM300 to annular gap.	-/120/120	75mm OD Pipe	SFC FRT180137b.2

The table above only relates to BOSS Fire® solutions using the MaxiCollars™ product. For other BOSS Fire® products that offer certified HDPE pipe penetration systems please consult the BOSS Fire® website - bossfire.com

cPVC PIPES & cPVC SPRINKLER PIPES

Service Penetration	Element	Substrate	System Description	Seal Size	FRL	Specific Dimensions	Certification Reference
cPVC Pipe 25mm	Wall	Min 116mm FR Plasterboard Concrete, Masonry	BOSS MaxiCollar™ 32mm with FireMastic-300™	MC-32 with FM300 to annular gap.	-/120/120	33.4mm OD Pipe	CSIRO COT 3040
cPVC Pipe 32mm	Wall	Min 116mm FR Plasterboard Concrete, Masonry	BOSS MaxiCollar™ 40mm with FireMastic-300™	MC-40 with FM300 to annular gap.	-/120/90	42.2mm OD Pipe	CSIRO COT 3039
cPVC Pipe 40mm	Wall	Min 116mm FR Plasterboard Concrete, Masonry	BOSS MaxiCollar™ 50mm with FireMastic-300™	MC-50 with FM300 to annular gap.	-/120/120	48.3mm OD Pipe	CSIRO COT 3038
cPVC Pipe 50mm	Wall	Min 118mm FR Plasterboard Concrete, Masonry	BOSS MaxiCollar™ 50mm with FireMastic-300™	MC-50 with FM300 to annular gap.	-/60/30	60.3mm OD Pipe	COT 180403d.1
cPVC Pipe 50mm	Wall	Min 116mm FR Plasterboard Concrete, Masonry	BOSS MaxiCollar™ 65mm with FireMastic-300™	MC-65 with FM300 to annular gap.	-/120/120	60.3mm OD Pipe	CSIRO COT 3045

The table above only relates to BOSS Fire® solutions using the MaxiCollars™ product. For other BOSS Fire® products that offer certified cPVC pipe penetration systems please consult the BOSS Fire® website - bossfire.com

PP-R (POLYPROPELENE RANDOM) PIPES

Service Penetration	Element	Substrate	System Description	Seal Size	FRL	Specific Dimensions	Certification Reference
PP-R Pipes							
PP-R Pipe (Aquatherm) 20mm	Wall	Min 118mm FR Plasterboard Concrete, Masonry	BOSS MaxiCollar™ 32mm with FireMastic-HPE™ Infill	MC-32 with FMHPE Infill to depth of Collar.	-/60/60	20mm OD Pipe	COT 180403b.1
PP-R Pipe (Aquatherm) 32mm	Wall	Min 118mm FR Plasterboard Concrete, Masonry	BOSS MaxiCollar™ 32mm with FireMastic-HPE™ Infill	MC-32 with FMHPE Infill to depth of Collar.	-/60/60	32mm OD Pipe	COT 180403b.1

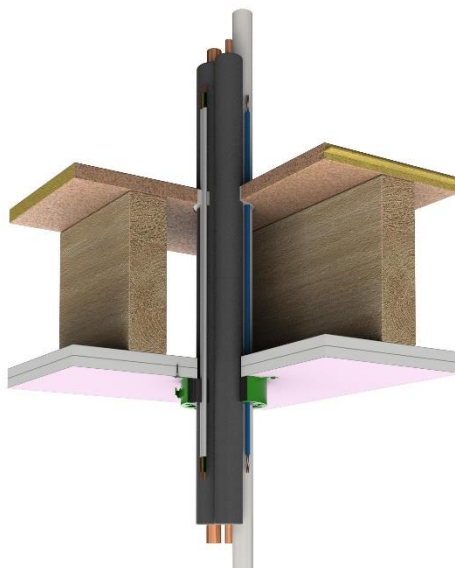
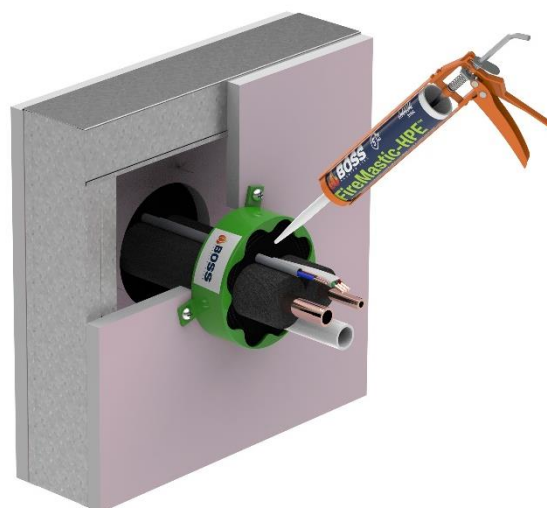
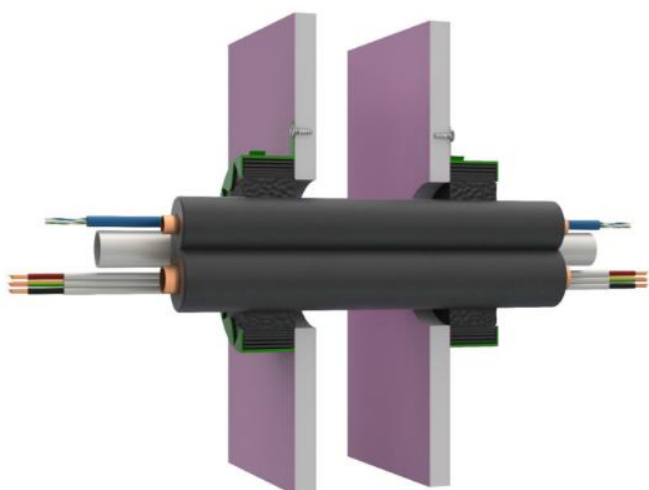
The table above only relates to BOSS Fire® solutions using the MaxiCollars™ product. For other BOSS Fire® products that offer certified PP-R pipe penetration systems please consult the BOSS Fire® website - bossfire.com



A/C PAIRCOIL - MULTI-SERVICE BUNDLES (HVAC+R)

Service Penetration	Element	Substrate	System Description	Seal Size	FRL	Specific Dimensions	Certification Reference
Paircoil / Power Cable / Data Cable / Outlet Pipe Bundle	Wall	Min 90mm Thick - 13mm FR Plasterboard, Concrete, Masonry	BOSS MaxiCollar™ 80mm with FireMastic-HPE™ Infill	MC-80 with FMHPE Infill to depth of Collar.	-/60/60	Paircoil (non-rated lagging), TPS Power Cable 2C+E, 2C Data Cable & 20mm uPVC outlet pipe.	CSIRO COT2920
Paircoil Bundle	Wall	Min 100mm Thick BOSS Batt	BOSS MaxiCollar™ 100mm with FireMastic-HPE™ Infill	MC-100 with FMHPE Infill to depth of Collar.	-/120/90	3 x Paircoil 9.52mm / 19.05mm (13mm Lagging)	FRT 190428
Paircoil / Power Cable / Data Cable / Outlet Pipe Bundle	Ceiling	Min 26mm FR Plasterboard - Overall 235mm Ceiling Floor System	BOSS MaxiCollar™ 80mm with FireMastic-HPE™ Infill FireMastic-300™	MC-80 with FMHPE Infill to depth of Collar. FM300 - Annular Gap x 19mm (D) Floor Side	-/60/60 -/90/90	Paircoil, TPS Power Cable 2C+E, CAT6 Data Cable up to 25mm uPVC	SFC FRT 180474.2

The table above only relates to BOSS Fire® solutions using the MaxiCollars™ product. For other BOSS Fire® products that offer certified Paircoil bundle penetration systems please consult the BOSS Fire® website - bossfire.com



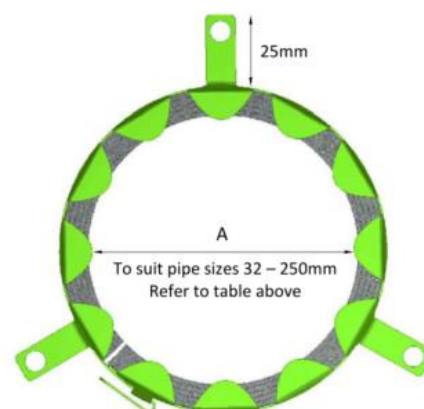
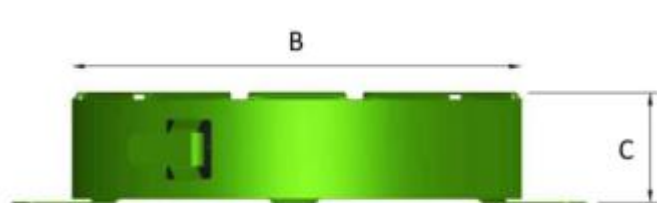
THERMOBREAK INSULATED METAL PIPES

Element	Substrate	FRL	Service Type	Service Size	Primary Fire Stopping Element	Secondary Fire Stopping Element	Tertiary Fire Stopping Element	Cert Ref
Walls	Min 96mm (90min FRL) or 116mm (120min FRL): -FR Plasterboard / GIB -Shaftwall / Shaftliner -Concrete -Solid & Hollow Masonry -AFS Walls with localised build up to min 96mm (90min FRL) or 116mm (120min FRL): -Speedpanel & Korok -AAC / Hebel -Pronto Panel -Supa Panel Build up options - 100mm clearance from perimeter of service: -BOSS Batt -FR Plasterboard -Calcium Silicate Board -Shaftwall / Shaftliner	Wall must be minimum 96mm Thick: -/90/90 Or Wall must be minimum 116mm Thick: - /120/120	Thermobreak Lagged Steel, Copper & Iron Pipes Lagging Thickness: 30 – 50mm	32mm - 80mm Ø	MaxiCollar™ - Fitted Both Sides FireMastic-300™ - Max 5mm wide x Min 5mm depth flush finish - Both Sides	P40-MAK Wrap - 300mm Both Sides	BOSS Batt - 2 x 50mm Used if needed to fire stop oversize apertures	FAS190346 R1.4
				80mm - 159mm Ø	MaxiCollar™ - Fitted Both Sides FireMastic-300™ - Max 5mm wide x Min 5mm depth flush finish - Both Sides	P40-MAK Wrap - 600mm Both Sides		
Floors	Min 150mm Concrete	-/120/120	Thermobreak Lagged Steel, Copper & Iron Pipes Lagging Thickness: 30 – 50mm	32mm Ø	MaxiCollar™ - Fitted Underside Only FireMastic-300™ - 10mm x 10mm fillet on top side only - Annular Gap Max 5mm wide x Min 25mm depth both sides	P40-MAK Wrap - 300mm Top Side Only	BOSS Batt - 2 x 50mm Used if needed to fire stop oversize apertures	FAS190346 R1.4
				32mm - 159mm Ø		P40-MAK Wrap - 600mm Top Side Only		
Walls	Min 100mm Thick: FR Plasterboard/GIB Concrete, Masonry Walls with Build Up to Min 100mm: -Speedpanel or similar	-/120/120	Thermobreak Lagged Steel & Copper Pipes (50mm Lagging)	Up to 80mm Ø	BOSS MaxiCollar™ + BOSS Batt - 2 x 50mm with Ablative Coating or BOSS Flexi-Batt - 1 x 100mm with Flexi-Coat-MAK Coating	P40-MAK Wrap - 300mm Both Sides	FireMastic-300™	FTC 842

The table above only relates to BOSS Fire® solutions using the MaxiCollars™ product. For other BOSS Fire® products that offer certified insulated non-combustible pipe penetration systems please consult the BOSS Fire® website - bossfire.com

SIZES

Part ID	Description	A (Max in mm)	B (Max in mm)	C (Max in mm)
MC-32	32mm MaxiCollar™	35mm	47mm	30mm
MC-40	40mm MaxiCollar™	43mm	55mm	30mm
MC-50	50mm MaxiCollar™	58mm	70mm	30mm
MC-65	65mm MaxiCollar™	66mm	80mm	30mm
MC-75	75mm MaxiCollar™	78mm	98mm	30mm
MC-80	80mm MaxiCollar™	85mm	105mm	30mm
MC-100	100mm MaxiCollar™	113mm	137mm	30mm
MC-125	125mm MaxiCollar™	128mm	156mm	40mm
MC-150	150mm MaxiCollar™	163mm	203mm	40mm
MC-200	200mm MaxiCollar™	203mm	247mm	40mm
MC-250	250mm MaxiCollar™	253mm	305mm	40mm



INSTALLATION

1. Ensure that your planned application is in accordance with an approved system, including the proposed substrate type, thickness, service type and size before installation.
2. As per the relevant test / assessment approvals if required fill annular gap around pipe or service with FireMastic-300™ sealant to the required depth and width of the approved system.
3. To fit the collar, open the collar by folding back the latching tab and sliding the collar ends apart. Wrap around the pipe and re-insert the fixing tab to close the collar. Fold back the tab to securely lock in place.
4. Mark the holes to be drilled at each tab onto the substrate and drill as required. Ensure only all-steel mechanical fixings are used – plastic or composite / alloy fasteners must not be used. Ensure a washer is also used if screw head not large enough to overlap the fixings holes. Pigtailed screws to be used in BOSS Batt.
5. In wall situations ensure sealant to annular gap is carried out on both sides of the wall, and the MaxiCollar™ is fitted to the outside face of both sides of the wall. In certain floor and ceiling approvals the collar may only be required to the underside of the floor slab or ceiling.

HEALTH AND SAFETY

To learn more about the safe handling of BOSS MaxiCollars™, see the Safety Data Sheet available at bossfire.com

IS THIS PUBLICATION CURRENT?

This document may be superseded by new versions. If you are unsure of whether or not this document is a current publication, please call us on 1300 303 366 to confirm.

LIMITATION

BOSS Fire & Safety Pty Ltd has provided the above technical information in good faith and to the best of its knowledge. This information was deemed to be correct at the time of publication. Should any data come to BOSS Fire & Safety's attention relating to the fire resistance or performance of the product described, BOSS Fire & Safety reserve the right to amend this report.

BOSS Fire & Safety strive to constantly improve and develop products so this information may change without notice.

The information contained herein has been developed as a guide only and it does not constitute a guarantee of compliance of all applications. Each project and/or application may have specific requirements and you should investigate these carefully. Ensure that you have read and understood the appropriate certification relative to your needs, and ensure you seek acceptance from the Certifying Authority or compliance inspector before installation. For updates on the range of BOSS Fire® certification please contact BOSS Technical Services. +61 2 9531 8591

FURTHER INFORMATION

For additional technical information on the performance of BOSS MaxiCollars™, other BOSS Fire® products or any other BOSS Fire® related information please contact us on:

AU:

1300 50 2677

Powagroup.com.au