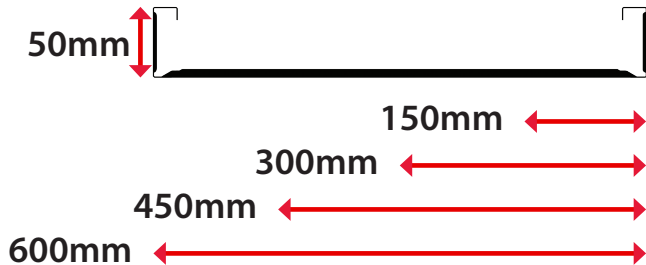
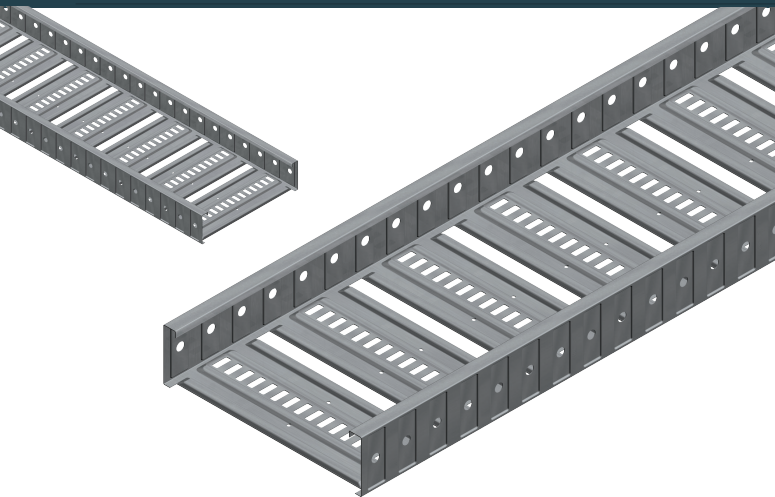


Technical Data Sheet | PT3 Cable Tray

PT3 Cable tray provides premium performance for commercial & light industrial electrical projects.

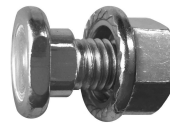
Strong, versatile & easy to install, its excellent performance characteristics combined with a visually appealing profile has made it the highest regarded tray product in the electrical industry.



LOAD PER METRE

SPAN	3.0m	29kg
	2.5m	40kg
	2.0m	62kg
	1.5m	116kg

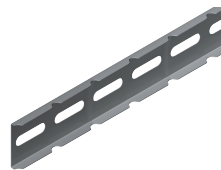
ACCESSORIES USED:



PT3 Cup Head Bolt & Flange
Nut M10 x 20mm Z/P



Cable Tray PT3 Hold Down Strap
S-Shape - Z/P

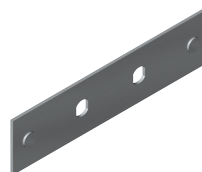


Cable Tray PT3 Radius Plate
x 1950mm

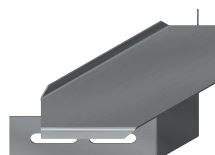
Tray Size	Length Required	Fasteners Required
PT3 150	0.7m	6
PT3 300	0.9m	6
PT3 450	1.2m	8
PT3 600	1.4m	8



Cable Tray PT3 Riser Link



Cable Tray Splice (Fish) Plate
to Join PT3 Tray



Cable Tray Tee Cross Bracket
- PT3 Corner

CABLE TRAY SIZES:

PT3 150MM:

Side Wall Height: 50mm
Cable Laying Width: 150mm
Overall Width: 172mm

PT3 300MM:

Side Wall Height: 50mm
Cable Laying Width: 300mm
Overall Width: 322mm

PT3 450MM:

Side Wall Height: 50mm
Cable Laying Width: 450mm
Overall Width: 472mm

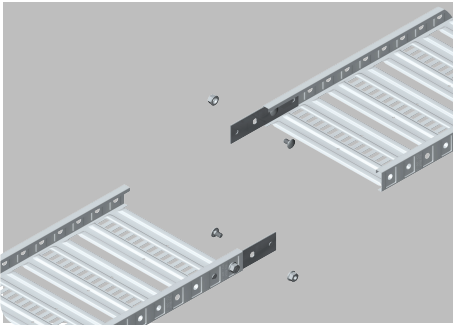
PT3 600MM:

Side Wall Height: 50mm
Cable Laying Width: 600mm
Overall Width: 622mm

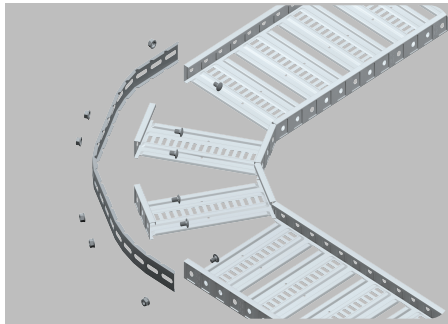
* The tray offers a 40mm cable laying depth.

ASSEMBLY METHODS:

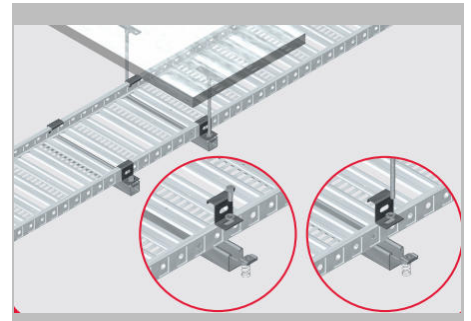
Splice:



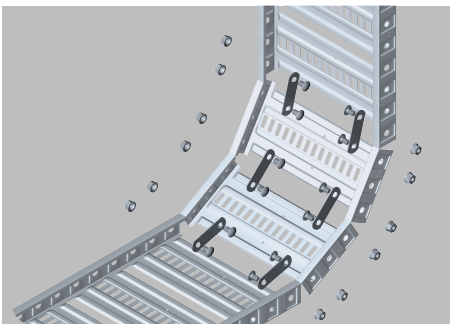
Bend:



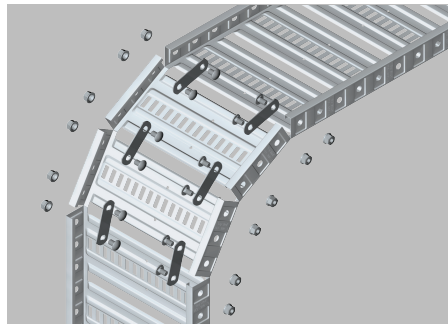
Hold Down:



Internal Riser:



External Riser:



Tee/Cross:

