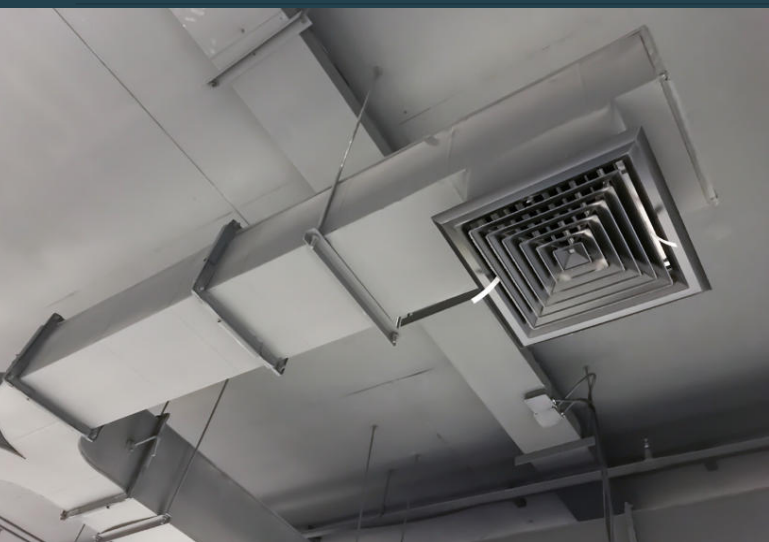


Technical Data Sheet

Duct Flange Corner Screw | Quick Screws



Product Features:

- Zinc plated (ROHS COMPLIANT)
- For quick fixing ducting connections
- Replaces the use of bolt and nut

Applications:

- > Heating
- > Ventilations
- > Air-conditioning duct work
- > Sheet metal applications

Product Details:

Size: M10.5-9 x 25mm

Drive AF size: 13 mm

Length: 25 mm

Diameter: 10.5 mm

TPI: 9



PART NO	DESCRIPTION	BOX QTY
03DFCSZ25	Duct Flange Corner Screw Zinc M10.5-9 x 25mm	500