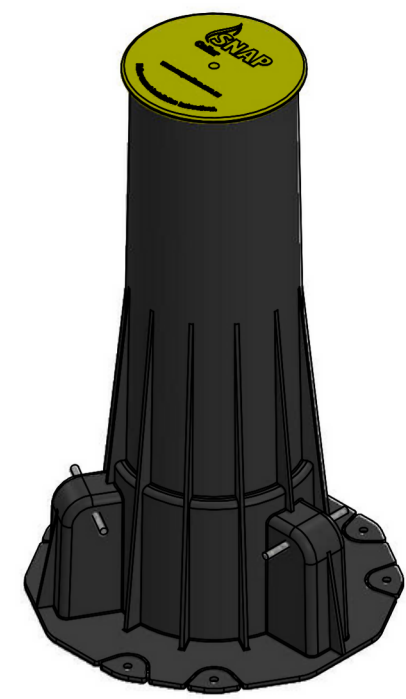
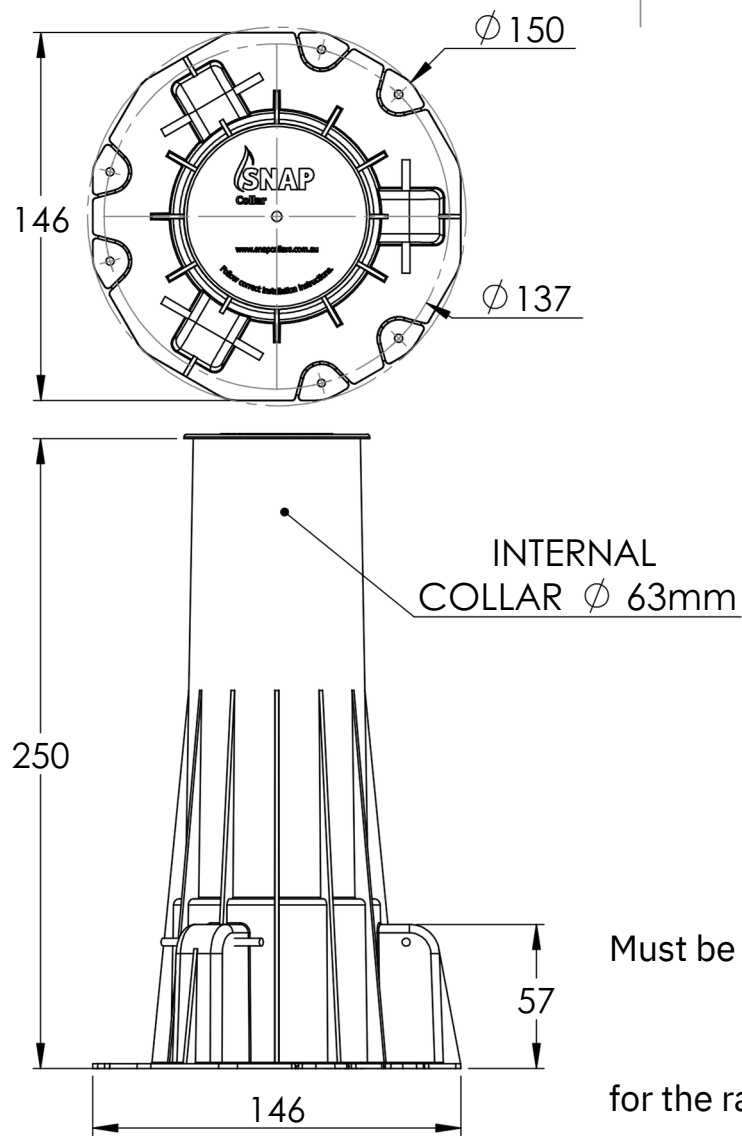


D  
C  
B  
A

D  
C  
B  
A

6 5 4 3 2 1

6 5 4 3 2 1



Check the product prior to Installation.  
Must be Installed In accordance with the Installation Instructions.  
Only fix using approved fixings.

Refer to **www.snapcollars.com.au**  
for the range of tested applications and Installation Instructions.



TITLE: SNAP 50 High-Top Floor Waste Shower	
DWG NO. H50FWS-RR	A4 SCALE:1:3
DO NOT SCALE DRAWING	WEB