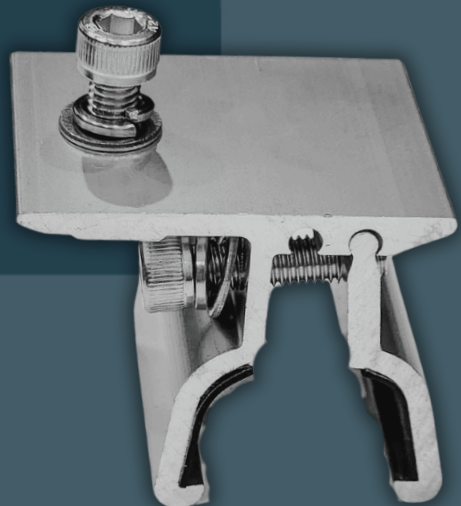


POWA Group

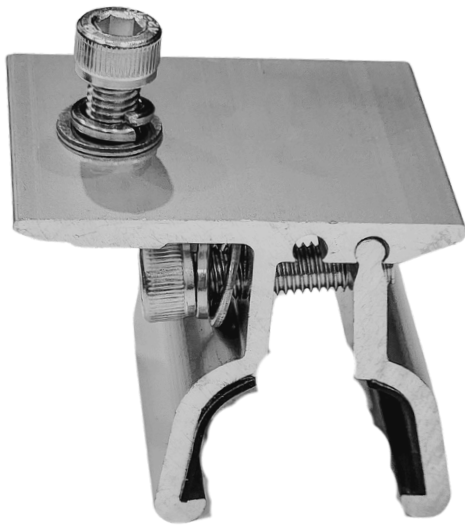
Klip-Lok Roof Bracket Or Roof Clamp

*The best ZERO Penetration rooftop
attachment solution.*



KLIP-LOK ROOF BRACKET OR ROOF CLAMP

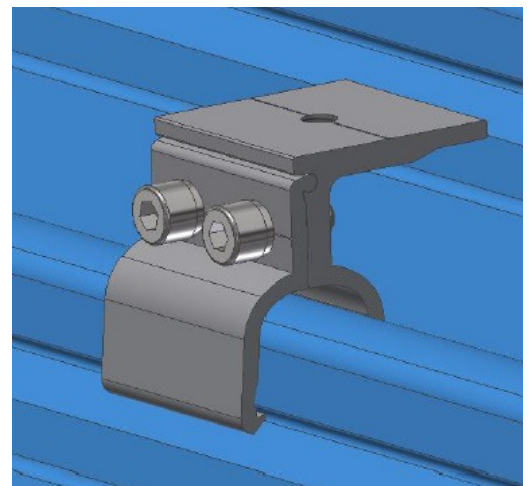
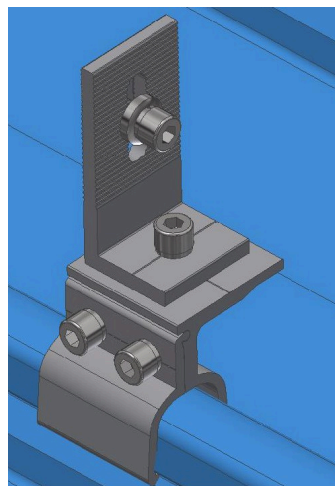
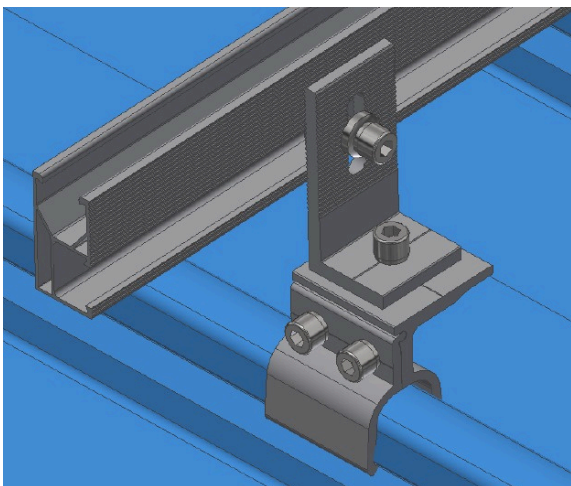
The best ZERO Penetration rooftop attachment solution for distinctive Standing Seam Metal Roof Profiles and works with the 700 series roofing profiles.



Key Features

- Top Plate Dimensions: 63mm x 48mm
- These clips are used with an M8 Bolt, and come in boxes of 10.
- It is great for mounting Solar, Air-conditioning, Electrical Bracketry, like strut profiles, on the roof without having to penetrate the roof or interrupt the water flow.
- ZERO Penetration rooftop attachment solution.

The greatest advantage of this mounting system is that its 90 degree angle means the mounting structure is easy to install, which saves the installation time and labour.



KLIP-LOK ROOF BRACKET OR ROOF CLAMP



Please see below the maximum vertical uplift capacity for HOP-TRB-C08.
Keep in mind that these clamps have not been tested for the horizontal loading.

Roof Sheeting Type	Placement of the Clamps on Roof Sheeting Ribs	Relation to Roof Purlins	Uplift Capacity (kN)
Lysaght Klip-Lok 700 Hi-strength®	Full & Lapped Ribs	On Purlin Only	1.83
Lysaght Klip-Lok 700 Classic®	Full & Lapped Ribs	On Purlin Only	1.83
Stramit Speed Deck Ultra®	Full & Lapped Ribs	On Purlin Only	1.89
Revolution Revklip 700®	Full & Lapped Ribs	On Purlin Only	1.19
Lysaght Klip-Lok 406®	Full Ribs Only	On Purlin Only	1.67