

# POW/AGroup

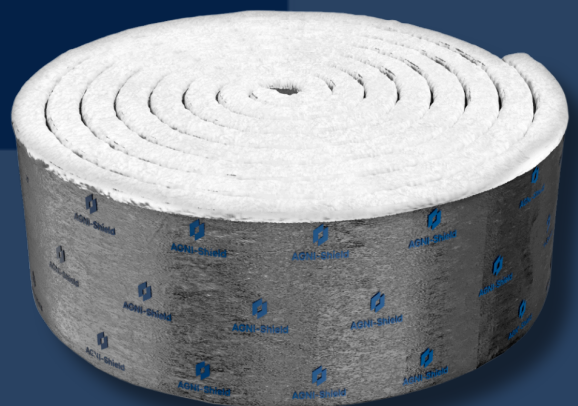


# Agnitek®

## AGNI-Shield®

*300 10mtr x 300mm x 13mm roll*

*600 10mtr x 600mm x 13mm roll*



## PRODUCT DESCRIPTION

AGNI-Shield is a 13mm thick fire-resistant insulating blanket consisting of flexible, fibrous matting bonded to a foil layer.

## PRODUCT CHARACTERISTICS

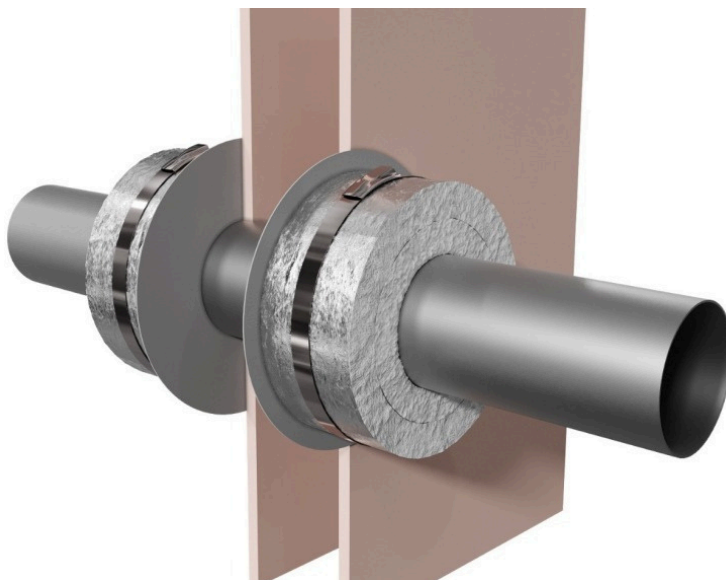
- Tested to AS1530.4-2014 to comply with AS4072.1- 2005 in NATA/IANZ accredited laboratories.
- Achieved FRL/FRR up to 240 for integrity and insulation.
- Tested and certified for the following substrates: plasterboard, concrete, Speedpanel and CLT.
- Tested and certified as a sole system & with AGNI-Board and AGNI-Seal.
- Tested and certified for use on metal pipes – insulated and non-insulated.
- Tested for applications with conduits, power and data cables, cable trays and AC-bundles.
- AGNI-Shield is non-toxic, halogen-free, contains no asbestos and causes no known effects on plastic pipes.
- Quick and easy to install.
- Environmentally friendly.
- Unlimited storage time under proper storage conditions.

## TECHNICAL DATA

|                                  |                  |
|----------------------------------|------------------|
| Width                            | 600mm            |
| Length                           | 10,000mm         |
| Thickness                        | 13mm             |
| Fire resistance rating (FRL/FRR) | Up to -/240/240  |
| Storage conditions               | -50°C up to 50°C |
| Package                          | 1 roll/carton    |

## APPLICATION

AGNI-Shield is typically installed being wrapped around penetrating services like metal pipes, insulated pipes, power and data cables, cable trays and other non-combustible services where they pass through fire-rated walls and floors to provide additional insulation to prevent excessive heat transfer to an adjacent fire compartment.



## INSTALLATION INSTRUCTIONS

1. Measure length of AGNI-Shield required to wrap around the penetration allowing for at an overlap of at least 100mm.
2. Cut AGNI-Shield to the required length and width. The width of AGNI-Shield depends on the material e.g. copper, brass or steel; diameter and wall thickness of the penetration. Please confirm with the Agnitek Technical Department.
3. Wrap the AGNI-Shield around the penetration and push it firmly against the substrate surface.
4. Fixed in place using AGNI-Straps, 50mm from either end and at centres of 150mm or less.
5. Apply a bead of AGNI-Seal to the join between the layer of AGNI-Shield and the substrate.

## THE AGNI-SHIELD® APPLICATION RANGE

| AGNI-PRODUCT | SUBSTRATE                                                                                                                                                                                                | SERVICE (s)                 | FRL       | OTHER AGNI-PRODUCTS      | AGNI-SYSTEM #    | COMPLIANCE REFERENCE |
|--------------|----------------------------------------------------------------------------------------------------------------------------------------------------------------------------------------------------------|-----------------------------|-----------|--------------------------|------------------|----------------------|
| AGNI-Shield® | <ul style="list-style-type: none"> <li>Min. 2 x layers of 13mm plasterboard on each side &amp; 64mm steel/timber stud</li> <li>Min. 116mm concrete</li> <li>Min 116mm solid or hollow masonry</li> </ul> | DN60mm steel pipe           | -/120/120 | AGNI-Seal<br>AGNI-Straps | AP-128           | PF24124              |
|              |                                                                                                                                                                                                          | DN32mm copper / steel pipe  | -/120/120 | AGNI-Seal<br>AGNI-Straps | AE-144           | PF24124              |
|              |                                                                                                                                                                                                          | DN100mm copper pipe         | -/120/120 | AGNI-Seal<br>AGNI-Straps | AP-144           | PF24124              |
|              | <ul style="list-style-type: none"> <li>2 x layers of AGNI-Board in min. 120mm concrete floor / ceiling</li> </ul>                                                                                        | DN50mm copper / steel pipe  | -/120/120 | AGNI-Seal<br>AGNI-Straps | AP-178           | PF24142              |
|              |                                                                                                                                                                                                          | DN100mm copper / steel pipe | -/120/120 | AGNI-Seal<br>AGNI-Straps | AP-178           | PF24142              |
|              |                                                                                                                                                                                                          | 16mm aluminium cable        | -/120/120 | AGNI-Seal<br>AGNI-Straps | AP-176           | PF24142              |
|              |                                                                                                                                                                                                          | 25mm aluminium cable        | -/120/120 | AGNI-Seal<br>AGNI-Straps | AP-176           | PF24142              |
|              |                                                                                                                                                                                                          | 50mm aluminium cable        | -/120/120 | AGNI-Seal<br>AGNI-Straps | AP-176           | PF24142              |
|              |                                                                                                                                                                                                          | D2 cable configuration      | -/120/120 | AGNI-Seal<br>AGNI-Straps | AE-179<br>AE-151 | PF24142<br>PF24125   |
|              | <ul style="list-style-type: none"> <li>Min. 120mm concrete floor / ceiling</li> </ul>                                                                                                                    | DN32mm copper / steel pipe  | -/120/120 | AGNI-Seal<br>AGNI-Straps | AP-164           | PF24141              |
|              |                                                                                                                                                                                                          | DN50mm copper / steel pipe  | -/120/120 | AGNI-Seal<br>AGNI-Straps | AP-164<br>AP-165 | PF24141              |
|              |                                                                                                                                                                                                          | DN100mm copper / steel pipe | -/120/120 | AGNI-Seal<br>AGNI-Straps | AP-164           | PF24141              |
|              |                                                                                                                                                                                                          | DN150mm copper / steel pipe | -/120/120 | AGNI-Seal<br>AGNI-Straps | AP-164           | PF24141              |
| AGNI-Shield® | <ul style="list-style-type: none"> <li>Min. 75mm Hebel wall</li> </ul>                                                                                                                                   | DN32mm copper / steel pipe  | -/120/120 | AGNI-Seal<br>AGNI-Straps | AP-168           | PF24145              |
|              |                                                                                                                                                                                                          | DN100mm copper / steel pipe | -/120/120 | AGNI-Seal<br>AGNI-Straps | AP-168           | PF24145              |
|              |                                                                                                                                                                                                          | DN50mm steel pipe           | -/120/120 | AGNI-Seal<br>AGNI-Straps | AP-170           | PF24145              |
|              | <ul style="list-style-type: none"> <li>Min. 25mm Shaftliner &amp; 16mm fire-rated plasterboard wall (Shaftwall system)</li> </ul>                                                                        | DN50mm steel pipe           | -/60/60   | AGNI-Seal<br>AGNI-Straps | AP-182           | PF24146              |
|              |                                                                                                                                                                                                          | DN32mm copper / steel pipe  | -/60/60   | AGNI-Seal<br>AGNI-Straps | AP-180           | PF24146              |
|              |                                                                                                                                                                                                          | DN100mm copper / steel pipe | -/60/60   | AGNI-Seal<br>AGNI-Straps | AP-180           | PF24146              |
|              | <ul style="list-style-type: none"> <li>Min 100mm CLT wall</li> </ul>                                                                                                                                     | DN50mm steel pipe           | -/60/60   | AGNI-Seal<br>AGNI-Straps | AP-092           | PF24086              |