

# POW/AGroup



# Agnitek®

## AGNI-Black®

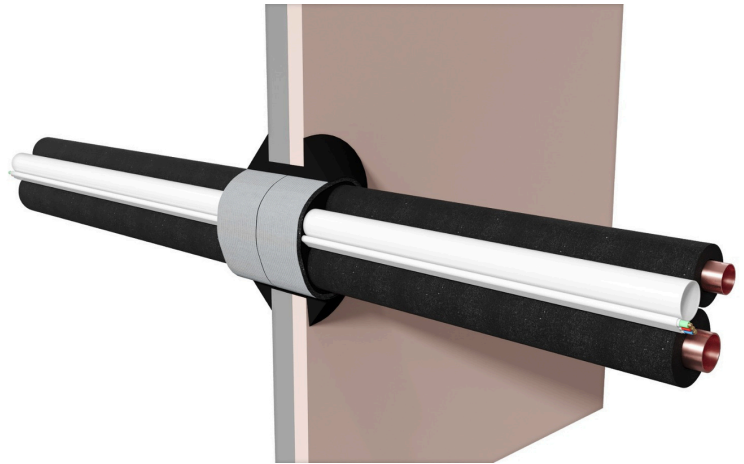
*High-Performance Intumescent Fire Sealant*



## PRODUCT DESCRIPTION

AGNI-Black is a high-pressure-exerting intumescent sealant designed to prevent the spread of fire, smoke, and gases through openings in fire-rated walls and floors.

When exposed to high temperatures, AGNI-Black expands and closes openings around service penetrations, forming a dense char plug. This intumescent plug stays intact, maintaining the integrity of the fire-rated barrier.



## PRODUCT CHARACTERISTICS

- Tested to AS1530.4 and compliant with AS4072.1-2005.
- Offers FRL/FRR up to -/120/120.
- Can be used in combination with AGNI-Wrap 50.
- Tested in AGNI-Plumbing systems for PEX, PEX-AL-PEX and PB pipes fire-stopping.
- Tested in AGNI-HVAC systems for pair coils fire stopping.
- Tested with maximum annular gaps up to 16mm.
- Expands up to 40 times.
- Easily applied, smoothed, and finished.
- Environmentally friendly fire-stopping solution.
- Work on the following surfaces: plasterboard, concrete, masonry, block work.
- No priming is necessary for the application to most materials.
- Suitable for internal applications.
- Proudly manufactured in Australia.



## TECHNICAL DATA

Expansion rate	40 times
Storage	12 months stored in unopened cartridges
Working life	30 years
Colour	Black
Condition	Ready for use graphite sealant
Compatibility	Suitable for use with plasterboard, concrete, masonry, block work
Service temp.	-15°C to 75°C
Packaging	Box containing 25 cartridges, each 310ml

## APPLICATION

**AGNI-Black** is used for:

- Fire-stopping of pair coils, single cables, cable bundles and pipe penetrations. It can be used as a sole system or with other AGNI products.
- Smoke sealing around service penetrations.

## THE AGNI-BLACK® APPLICATION RANGE

AGNI-PRODUCT	SUBSTRATE	SERVICE DIAMETER & TYPE	FRL	OTHER AGNI-PRODUCTS	AGNI-SYSTEM #	COMPLIANCE REFERENCE
AGNI-Black •	<ul style="list-style-type: none"> <li>Min. 1 x layer of 13mm FR plasterboard wall;</li> <li>Min 90mm concrete wall</li> <li>Min 90mm masonry wall</li> </ul>	AGNI-Plumbing, AGNI-Electrical, AGNI-HVAC				
		DN16mm PEX pipe	-/60/60	-	AP-112	PF24143
		DN25mm PEX pipe	-/60/45			
		DN32mm PEX pipe	-/60/15			
		Up to 32mm PEX-AL PEX pipes	-/60/60	-	AP-113	PF24143
		1 x FR pair coil	-/60/60	-	AE141	PF24143
		1 x PE pair coil	-/60/45			
		2 x FR pair coil + electrical cable + DN20 uPVC pipe	-/60/60	-	AE-143	PF24143
		2 x PE pair coils + 2 x TPS cables	-/60/60	AGNI-Wrap 50	AE-130	PF24102
		1 x PE pair coils + 1 x TPS cables	-/60/60	AGNI-Wrap 50	AE-131	PF24102
AGNI-Black •	<ul style="list-style-type: none"> <li>2 x layers of 13mm FR plasterboard wall;</li> <li>Min 116mm concrete wall</li> <li>Min 116mm masonry wall</li> </ul>	Up to 32mm PEX pipes	-/120/120	-	AP-112	PF24101 PF24144
		DN40mm PEX pipe	-/120/-			
		Up to 32mm PEX-AL-PEX pipes	-/120/120	-	AP-113	PF24101 PF24144
		From DN15mm up to DN28mm Polybutene pipe (PB)	-/120/120	-	AE-114	PF24101
		1 x FR/PE pair coil	-/120/120	-	AE-141	PF24144
		1 x FR pair coil + electrical cable + DN25 uPVC pipe	-/120/120	-	AE-143	PF24144
	Min 75mm Hebel wall	1 x PE pair coil + TPS Cable + 20mm Condensate Pipe	-/120/60	AGNI-Wrap 50	AE-173	PF24145
		1 x FR pair coil + TPS cable + 20mm condensate pipe	-/120/120			
	<ul style="list-style-type: none"> <li>Min. 25mm Shaftliner &amp; 1 x layer of 16mm FR plasterboard</li> </ul>	DN25mm PEX pipe	-/120/120	AGNI-Wrap 50	AP-174	PF24145
		1 x FR/PE pair coil + TPS cable + 20mm condensate pipe	-/60/60	AGNI-Wrap 50	AE-185	PF24146
		DN25mm PEX pipe	-/60/60	AGNI-Wrap 50	AP-186	PF24146