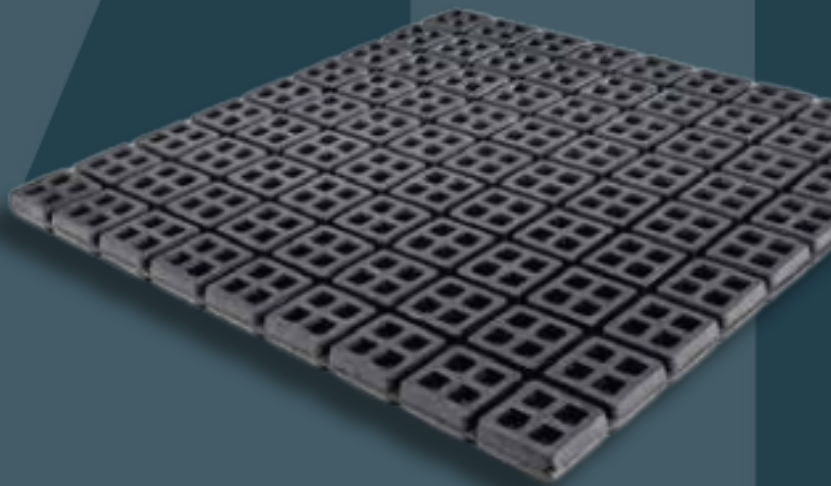


# POWA Group

## Rubber Super Waffle Pad

*10mm & 20mm*



# Rubber Super Waffle Pad

10mm & 20mm



## KEY FEATURES

- Highly resilient, high performance rubber pad.
- Our modular design offers the flexibility, economy and convenience in every application.
- Each pad comprises 81 square modules of 50mm x 50mm joined by a thin webbing to streamline cutting to any size and shape.
- Loading up to 75Kg per module with 3mm deflection.
- Square cell construction is more efficient than any other design of modular pad available and effectively minimises transmission of noise and provides a higher degree of vibration / shock isolation than any other commonly used pad.

### 10mm

- Size: 450mm x 450mm x 10mm
- Deflection: 2mm - Single Layer At Rated Load

### 20mm

- Size: 450mm x 450mm x 20mm
- Deflection: 3mm - Single Layer At Rated Load
- Capacity: Loading Recommended up to 75kg per module

## APPLICATIONS

- Chillers
- Pumps
- HVAC Units
- Vent Sets
- Condensers
- Transformers
- Roller Doors
- Saws Drill
- Presses
- Compressors
- Punch Presses
- Lathes
- Fan Control Units
- Power Generators
- Electrical Switchboards
- Power Presses
- Magnetic Bearing Chillers

PART NO.	DESCRIPTION	WEIGHT
16WP20	Rubber H/Duty Waffle Pad 450mm x 450mm x 20mm	3.9 Kg Per Pad
16WP10	Rubber Waffle Pad 450mm x 450mm x 10mm	2.0 Kg Per Pad