



# **POW/AGroup**

## **CABLE TRAY SYSTEMS**

- PT3 Cable Tray
- PowAMesh
- Nema Fire Rated Cable Ladder

# ABOUT US

ON-SITE SOLUTIONS AHEAD OF TIME



## OUR STORY

PowAGroup is a wholesaler of high quality products and solutions for the Plumbing, HVAC, & Electrical Trades with a focus on Passive Fire.



## OUR MISSION

Our mission is to help people we work with...**Get Places...**to achieve their goals in life.

Doing business with us is straightforward, fast, and enjoyable. We consistently deliver high-quality, innovative products and on-site solutions ahead of time.

## OUR RANGE



PT3 Cable Tray



PowAMesh



Nema Tray

## WHY CHOOSE US?



Precut Solutions



Delivery Service



Cost Savings

## CONTACT US:



[sales@powagroup.com.au](mailto:sales@powagroup.com.au)



1300 303 366

**POWAGroup**



**Sydney Location**

4/16 Mavis Street  
Revesby, NSW 2212, Australia



**Canberra Location**

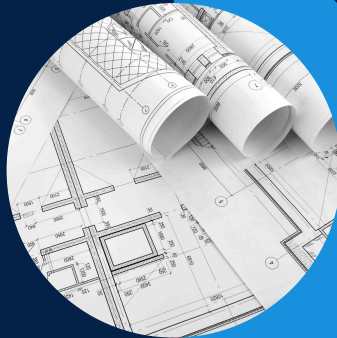
25 Common St | PO Box: 1236  
Goulburn NSW 2580, Australia

# TAKE-OFF PROCESS

HAVE  
DRAWINGS

## CLIENT SENDS DRAWINGS

Send us your  
Project Drawings.



DONT HAVE  
DRAWINGS

## CLIENT SENDS BOM LIST

Your Estimating  
department may  
put together.

## TAKE-OFF

Our In-house engineers  
put together an all  
inclusive packaged  
quotation incl. specific  
QTY's needed.



## QUOTE

Based on BOM List we  
provide quote with  
appropriate fixings etc.

## ORDER APPROVAL

Take-off Approved  
Organise Delivery  
Date/s & Option for  
Draw down off Master  
Quote.



## ORDER APPROVAL

Take-off Approved  
Organise Delivery  
Date/s & Option for  
Draw down off Master  
Quote.

## DELIVERY

Direct to Site in  
Powagroup Vehicles.  
Can deliver palletized  
sections of projects  
as required.



## DELIVERY

Direct to Site in  
Powagroup Vehicles.  
Can deliver palletized  
sections of projects  
as required.

# PRECUT SOLUTIONS

## INSTALLATION - HOW WE CAN HELP



### QUICK & RELIABLE



#### ✓ FASTER INSTALLATION TIME

Our pre-cut support systems are delivered all ready for installation, therefore reducing time spent assembling on site.

#### ✓ RELIABILITY

Our system work is scheduled so it can't be affected by any restrictions or conditions on site.

#### ✓ CONSISTENCY & QUALITY

Every order is quality checked thoroughly before dispatch and procedures are followed in production to ensure consistency across all systems.

#### ✓ VALUE FOR MONEY

Our Pre-cut solutions off-site is a lot more cost effective than attempting to cut, assemble and use your own tools on-site.

### SAVE \$\$ & SAFER



#### ✓ SITE DELIVERIES

No small deliveries needed for fixings and extra parts as all included in bulk pre-fabricated package, which means less time spent on planning and checking for deliveries.

#### ✓ LABOUR TIME

At Powagroup, we do the pre-cutting & fabrication in-house skillfully, saving your tradespeople time to focus on their job & what they are best at.

#### ✓ LESS WHS ISSUES (WORK HEALTH & SAFETY)

Don't need to cut on site. Eliminate the risk of onsite cutting errors, saving valuable time and money that would otherwise be wasted.

#### ✓ SPACE USED ON SITE

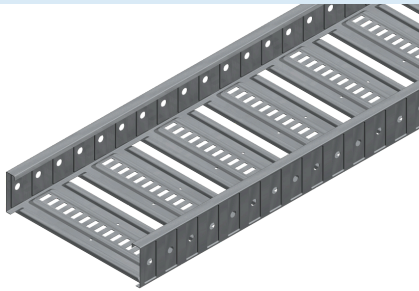
Storage for materials and designated fabrication areas can be massively reduced.

# OUR RANGE

## CABLE TRAY SYSTEMS

### CABLE TRAY SYSTEMS

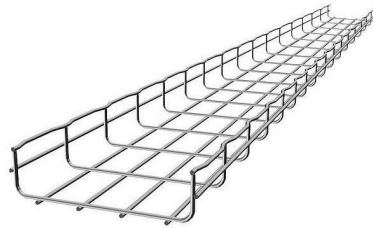
Our Cable Tray Range offers a complete selection tailored to various needs. Whether you're dealing with heavy cables, tricky routing setups, or simpler installations, we've got you covered with options that are sturdy, adaptable, and easy to use.



#### PT3 CABLE TRAY



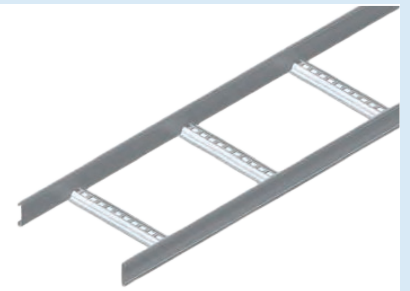
- Strong, versatile & easy to install
- Premium performance for commercial & light industrial electrical projects



#### POWAMESH



- Flexible & lightweight solution with an open-weave design
- Easy access and simple installation

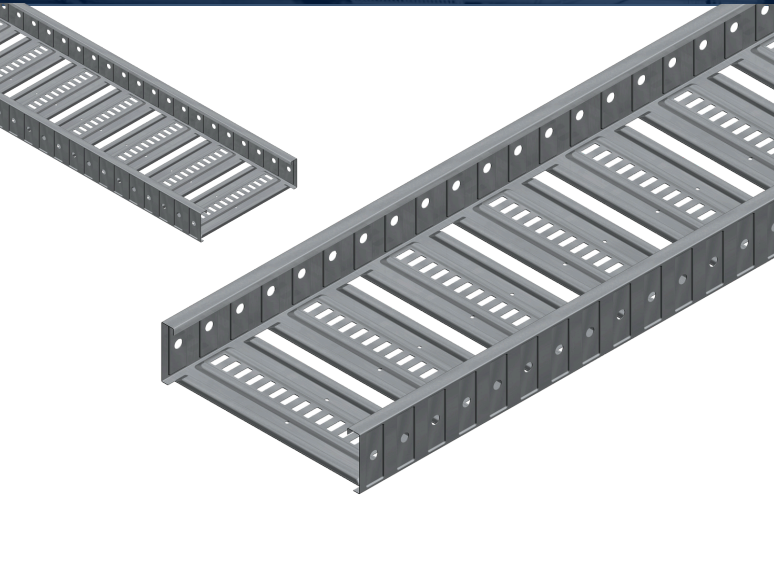


#### NEMA CABLE LADDER

- PowAGroup's steel cable ladder range is designed to be a cost effective cable support system for high volumes of heavy weight cables. They can support very high loads, over long spans and provide cable laying depths from 43 up to 135mm.

We also offer powder-coated trays and fire-rated trays to suit specific project requirements.

# PT3 CABLE TRAY



## KEY FEATURES

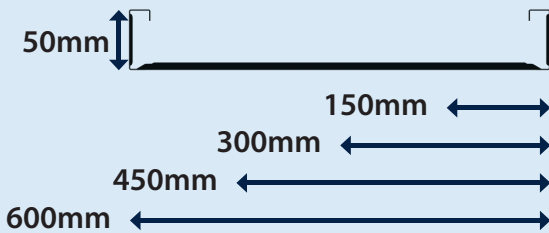
PT3 Cable tray provides premium performance for commercial & light industrial electrical projects.

Strong, versatile & easy to install, its excellent performance characteristics combined with a visually appealing profile has made it the highest regarded tray product in the electrical industry.

Manufactured to the following AS standards:

- Pre-Galvanised to AS1397
- Hot Dip Galvanised to AS/NZS4680; ISO1461

## CABLE TRAY ACCESSORIES



LOAD PER METRE	
SPAN 3.0m	35kg
2.5m	50kg
2.0m	75kg
1.5m	135kg

## CABLE TRAY SIZES

**PT3 150MM:**

Side Wall Height:  
50mm Cable  
Laying Width:  
150mm  
Overall Width:  
172mm  
Product Code:  
08ET3T1503

**PT3 450MM:**

Side Wall Height:  
50mm Cable  
Laying Width:  
450mm  
Overall Width:  
472mm  
Product Code:  
08ET3T4503

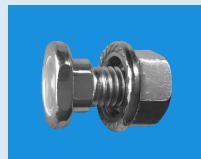
**PT3 300MM:**

Side Wall Height:  
50mm Cable  
Laying Width:  
300mm  
Overall Width:  
322mm  
Product Code:  
08ET3T3003

**PT3 600MM:**

Side Wall Height:  
50mm Cable  
Laying Width:  
600mm  
Overall Width:  
622mm  
Product Code:  
08ET3T6003

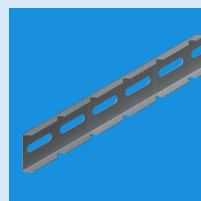
\* The tray offers a 40mm cable laying depth.



PT3 Bolt & Flange Nut M10 x 20mm Z/P  
Product Code: 08PT3BFN

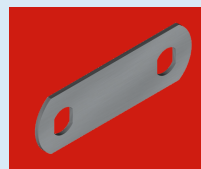


Cable Tray PT3 Hold Down Strap S-Shape - Z/P  
Product Code: 08ET3HDS

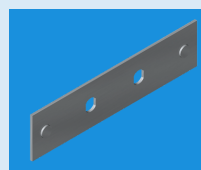


Cable Tray PT3 Radius Plate x 1950mm  
Product Code: 08ET3RP

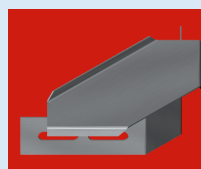
Tray Size	Length Required	Fasteners Required
PT3 150	0.7m	6
PT3 300	0.9m	6
PT3 450	1.2m	8
PT3 600	1.4m	8



Cable Tray PT3 Riser Link  
Product Code: 08ET3RL



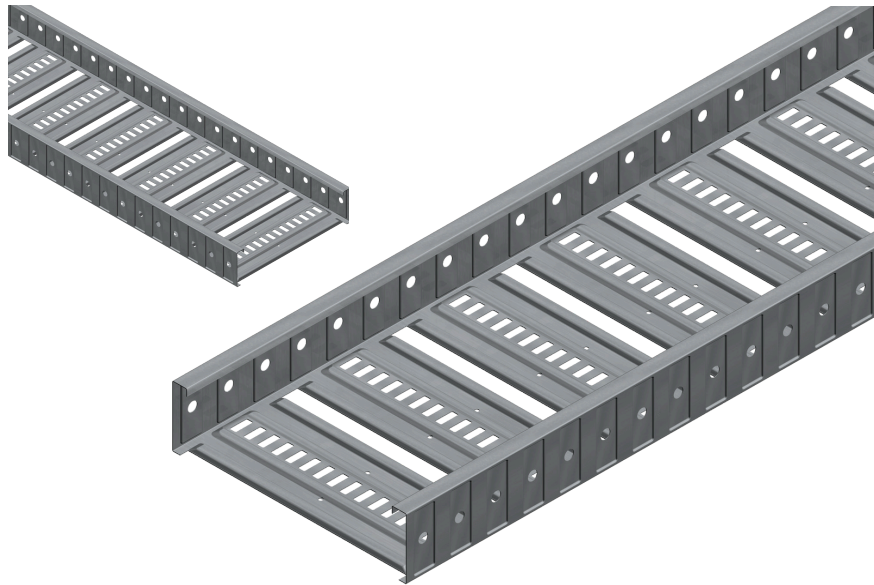
Cable Tray Splice (Fish) Plate to Join PT3 Tray  
Product Code: 08ET3SFP



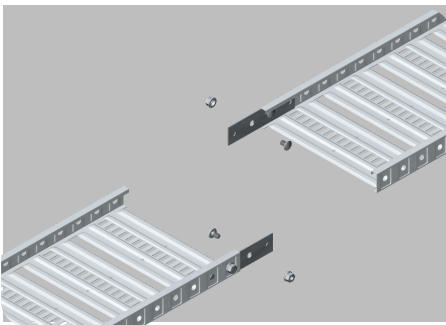
Cable Tray Tee Cross Bracket - PT3 Corner  
Product Code: 08ET3TCB

# PT3 CABLE TRAY

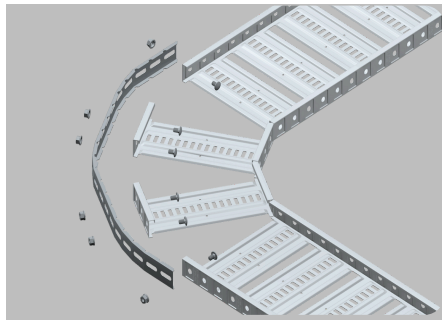
## CABLE TRAY ASSEMBLY METHODS



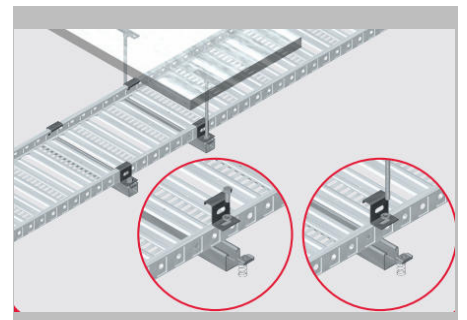
**Splice:**



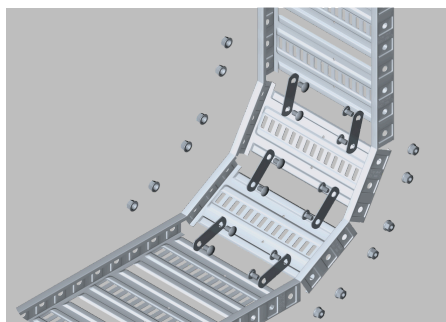
**Bend:**



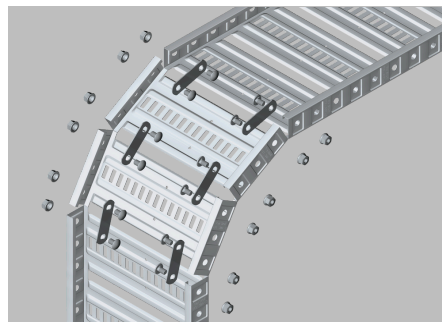
**Hold Down:**



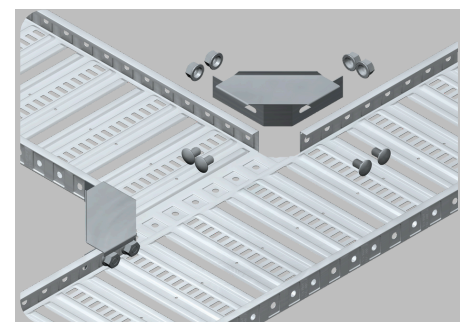
**Internal Riser:**



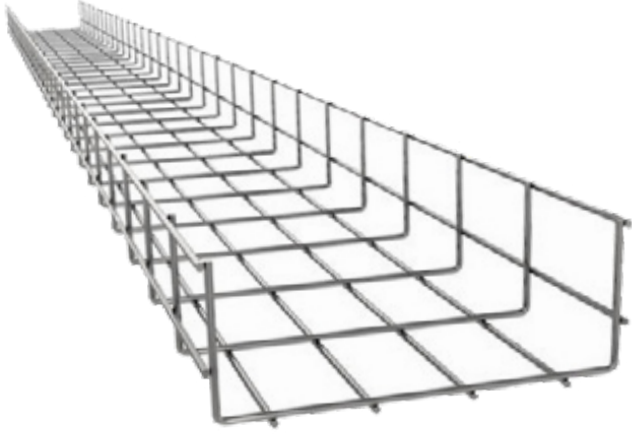
**External Riser:**



**Tee/Cross:**



# POWAMESH



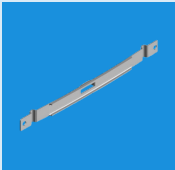
## KEY FEATURES

Tested in accordance with the Nema requirements.

Flexible & lightweight solution with an open-weave design.

Cable Laying Width (mm)	Product Code
75mm x 3 mtrs	08MCT75
150mm x 3 mtrs	08MCT150
300mm x 3 mtrs	08MCT300
450mm x 3 mtrs	08MCT450
600mm x 3 mtrs	08MCT600

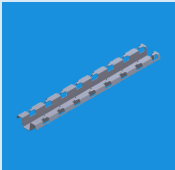
## POWAMESH ACCESSORIES



Mesh Tray Quick Splice Plate  
Product Code: **08MTSP**



Mesh Tray Corner Splice Clip  
Product Code: **08MTCSC**



Mesh Tray Trapeze Bracket  
Product Code: **08MTTB213**



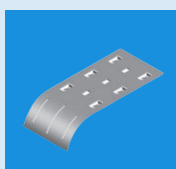
Mesh Tray Hold Down Bracket  
Product Code: **08MTHDB**



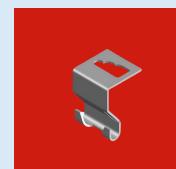
Mesh Tray Quick Hold Down Bracket  
Product Code: **08MTQHDB**



Mesh Tray Bolt Joiner  
Product Code: **08MTBJ**



Mesh Tray Cable Guide  
Product Code: **08MTCG**



Mesh Tray Hanging Clip  
Product Code: **08MTHC**

## Load in kg/m per support centres (mm):

Span	1500mm	2000mm
Load Rating	111kg/m	62kg/m
Deflection	22mm	29mm

The data displayed is based on physical test results of a 600 wide section and may vary for other widths.

The Deflections have been provided as a guide based on continuous spans, and cannot be applied to end spans.

Data provided assumes that the installation will be carried out in accordance with Nema VE2. Non compliance may affect the overall product performance.

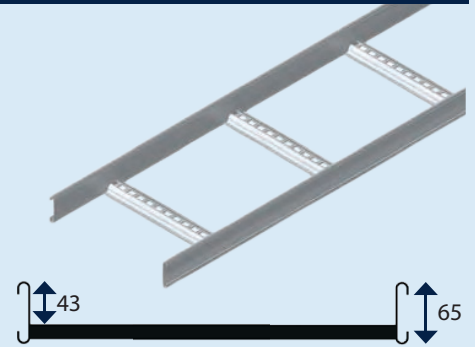
Span	2500mm	3000mm
Load Rating	40kg/m	27.87kg/m
Deflection	41mm	51mm



# NEMA CABLE LADDER

## N1 NEMA 1 CABLE LADDER

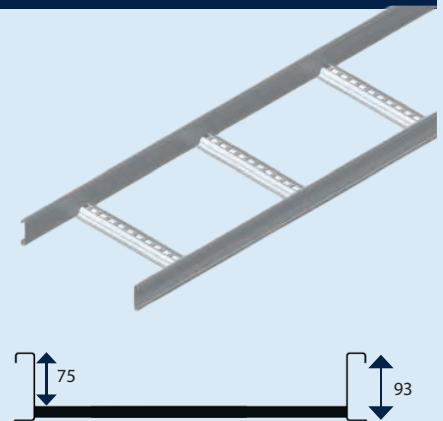
HDG		SPAN	LOAD PER MTR
WIDTH(MM)	WEIGHT(KG)		
150	9.3/3m	3.0m	112kg
300	10.5/3m	2.5m	160kg
450	11.7/3m	2.0m	233kg
600	12.9/3m	1.5m	248kg
900	15.3/3m		



Meets **Nema 12A** loading requirements  
**3m lengths standard** (Also available in 6m lengths)

## N2 NEMA 2 CABLE LADDER

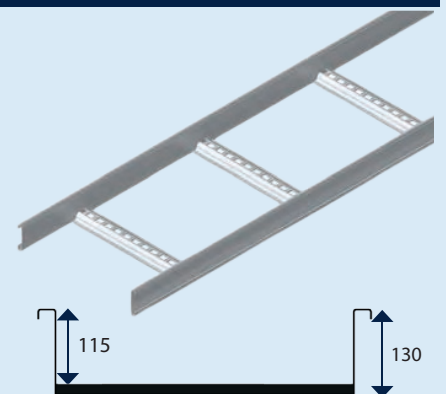
HDG		SPAN	LOAD PER MTR
WIDTH(MM)	WEIGHT(KG)		
150	20.8/6m	6.0m	50kg
300	23.2/6m	5.5m	60kg
450	25.6/6m	5.0m	72kg
600	28/6m	4.5m	89kg
900	32.3/6m	4.0m	113kg



Meets **Nema 16A** loading requirements.  
**6m lengths standard** (Also available in 3m lengths).

## N3 NEMA 3 CABLE LADDER

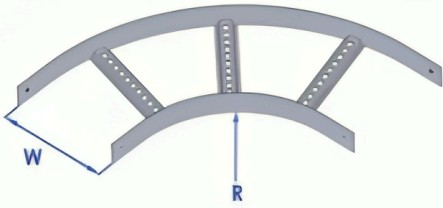
HDG		SPAN	LOAD PER MTR
WIDTH(MM)	WEIGHT(KG)		
150	32.7/6m	6.0m	111kg
300	35.1/6m	5.5m	127kg
450	37.5/6m	5.0m	134kg
600	39.9/6m	4.5m	165kg
900	44.7/6m	4.0m	209kg



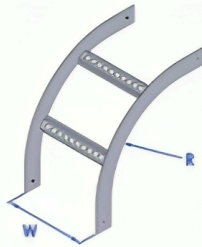
S/S	
WIDTH(MM)	WEIGHT(KG)
150	38.5/6m
300	40.8/6m
450	43.1/6m
600	45.4/6m
900	50/6m

Meets **Nema 20B** loading requirements.  
**6m lengths standard** (Also available in 3m lengths).

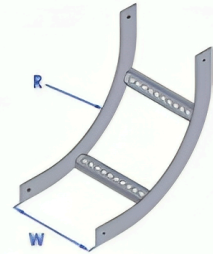
# NEMA LADDER SHAPES



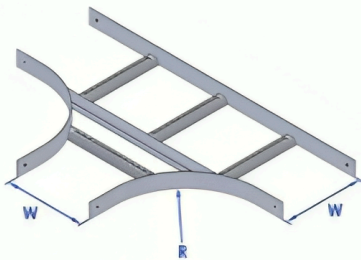
Nema Bend



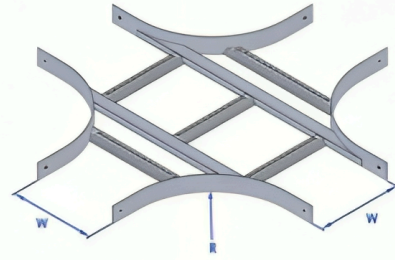
Nema External Riser



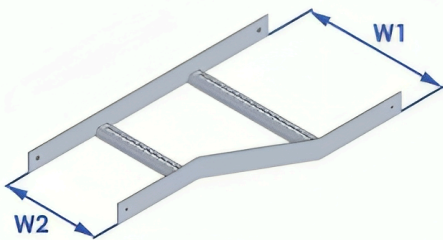
Nema Internal Riser



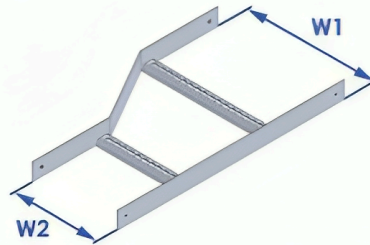
Nema Tee



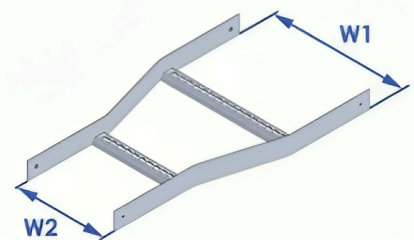
Nema Cross



Nema Right Hand Reducer



Nema Left Hand Reducer



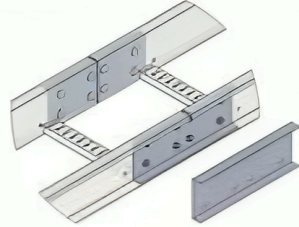
Nema Straight Reducer

Ladder Type	Shape Type	Width (mm)	Radius "R"	Finish
N1 = Nema 1	b = Bend 90°	150	3 = 300mm (standard)	H = Hot Dip Galvanised
N2 = Nema 2	ER = External Rise 90°	300	4 = 450mm	S = Stainless Steel 316 grade
N3 = Nema 3	IR = Internal Riser 90°	450	9 = 900mm	
N4 = Nema 4	T = Tee	600	12 = 1200mm	
	C = Cross	900		
	SR = Straight Reducer			
	LHR = Left Hand Reducer			
	RHR = Right Hand Reducer			

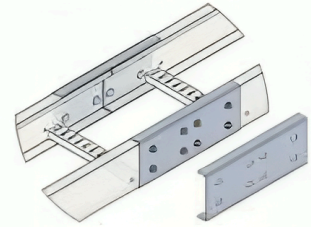
# NEMA LADDER ACCESSORIES



Splice Plate: N1



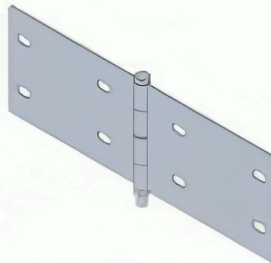
Splice Plate: N2, 3 & 4 (20C)



Splice Plate: N2, 3 & 4 (20C)  
Inverted Rail



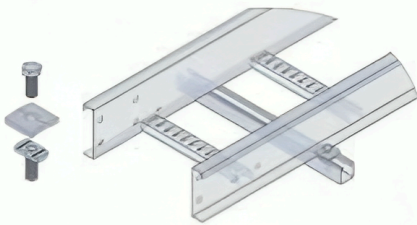
Vertical Splice Plate



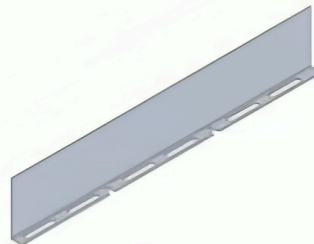
Horizontal Splice Plate



Hold Down Unit: N1



Hold Down Unit: N2, 3 & N4 (20C)



Nema Ladder Divider Strip

Length: 3m

3 sets of fixings suggested per piece (Ordered separately)

Ladder Type	Shape Type	Finish
N1 = Nema 1	S = Splice Plate	H = Hot Dip Galvanised
N2 = Nema 2	SRI = Splice Plate Rail In Ladder	S = Stainless Steel 316 grade
N3 = Nema 3	VS = Vertical Splice	
N4 = Nema 4	HS = Horizontal Splice	
	HDU = Hold Down Unit	
	D = Divider Strip	

# CASE STUDY GALLERY

CLIENT PROJECTS WE'VE SUPPLIED TO

